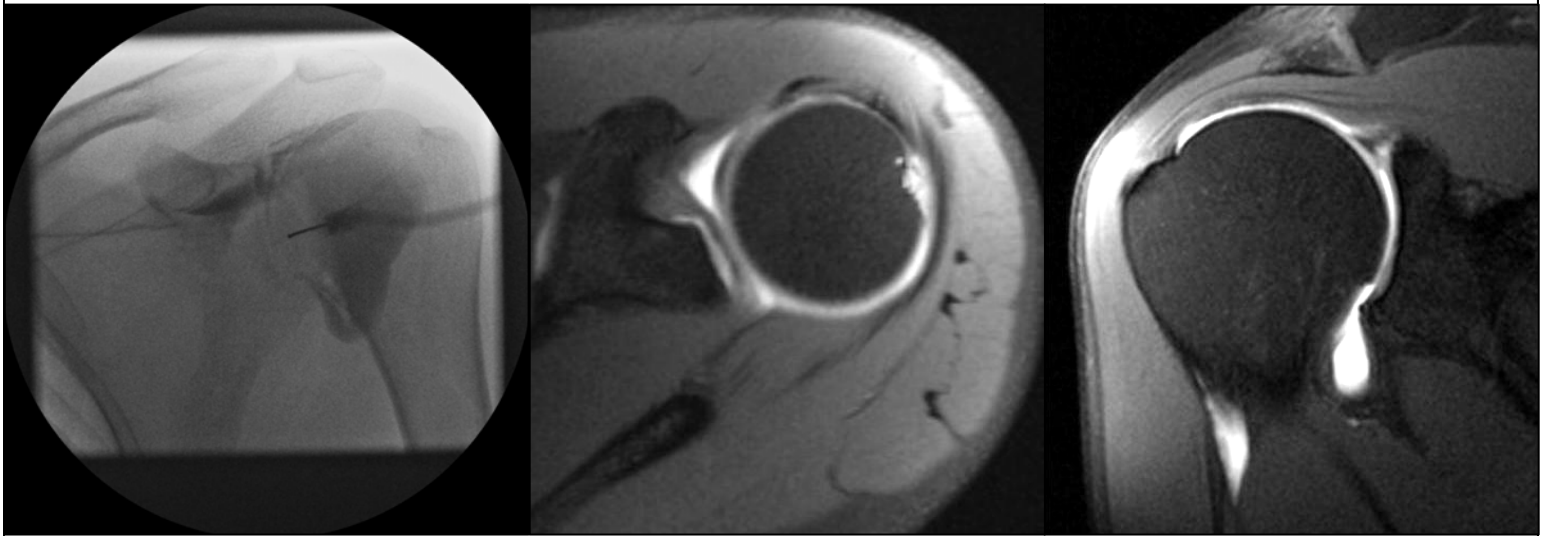


MRI ARTHROGRAPHY



SLAP Tear

NRAD is pleased to offer MRI Arthrography at our 765 Stewart Avenue office in Garden City. Examinations are expertly performed and interpreted by Board Certified radiologists with sub-specialty fellowship-level training in Musculoskeletal imaging.

INDICATIONS:

- Persistent pain in the absence of significant findings on conventional MRI.
- Post-surgical cases.
- Suspected labral tears, capsular injuries and arthrofibrosis.
- Recurrent dislocation.

MOST COMMON CPT CODES*:

Fluoroscopic Injections:

- Shoulder - 23350
- Hip - 27093
- Knee - 27370

MRI:

- Shoulder - 73221
- Hip - 73721
- Knee - 73721

*CPT codes for other joints can be provided

WHAT PHYSICIANS AND PATIENTS NEED TO KNOW:

- Minimally invasive study involving a fluoroscopic procedure prior to MRI.
- Involves administering a dilute solution of gadolinium into the joint prior to MRI.
- Significantly increases sensitivity for detection of occult symptom generators.
- Appropriate for examination of the shoulder, elbow, hip, knee and ankle.
- Well tolerated by patients.

Christopher Foresto, M.D.

516-222-2022



NASSAU RADIOLOGIC GROUP PC & AFFILIATES

It's your body...It's your life.

Joshua Kern, M.D.

nrad.com