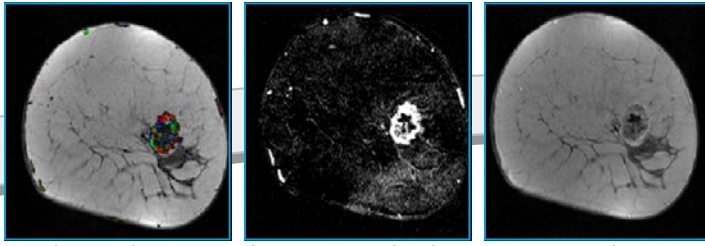


BREAST MRI



Irregular rim-enhancing mass demonstrating washout kinetics: Invasive Ductal Carcinoma

NRAD is pleased to provide state-of-the-art Breast MRI and MRI guided biopsy at our 6 Ohio Drive, Lake Success office. We have been performing and interpreting Breast MRI for over a decade and have compiled one of the largest bodies of case experience in the country. We have also been at the forefront of MRI guided biopsy. Because of our unparalleled experience and expertise, we are widely considered leaders in this specialty.

INDICATIONS: PATIENTS WITH BREAST CANCER

- Evaluation of extent of disease and staging of newly diagnosed breast cancer
- Axillary lymphadenopathy with unknown primary
- Monitoring response to neoadjuvant chemotherapy
- Evaluation of reconstructed breast after mastectomy
- Evaluation of chest wall recurrence of breast CA

CPT CODES

Breast MRI

- 77058 Unilateral
- 77059 Bilateral

Breast MRI Biopsy

- 77021 Guidance
- 19103 Core
- 19295 Clip

SCREENING OF HIGH RISK PATIENTS:

American Cancer Society Guidelines for Breast MRI Screening in addition to mammography include:

- BRCA 1 or 2 mutation
- First-degree relative with a BRCA 1 or 2 mutation and are untested
- Lifetime risk of breast cancer of 20-25 percent or more using standard risk assessment models
- History of radiation treatment to the chest between ages 10 and 30, such as for Hodgkin Disease
- First-degree relative who carries a genetic mutation in the TP53 or PTEN genes (Li-Fraumeni syndrome and Cowden and Bannayan-Riley-Ruvalcaba syndromes)

OTHER HIGH RISK GROUPS:

- Personal history of breast cancer, carcinoma in situ, atypical hyperplasia, extremely dense breasts on mammography

Breast MRI is the most accurate way to assess for silicone implant rupture.

The FDA recommends periodic screening for silent rupture.

If you have a patient who may be a candidate for a Breast MRI, please call us at **516.222.2022** or **718.380.6010**

Our comfortable and convenient state-of-the-art facilities that perform Breast MRI are available in

Lake Success ❖ *Woodbury*



Robin Ehrenpreis, M.D.



Lori H. Kelly, M.D.



Alice Y. Kim, M.D.



Geraldine McGinty, M.D.



Julian Safir, M.D.



Corinne E. Tobin, M.D.

516-222-2022

NRAD
NASSAU RADIOLOGIC GROUP PC & AFFILIATES
It's your body...It's your life.

nrad.com