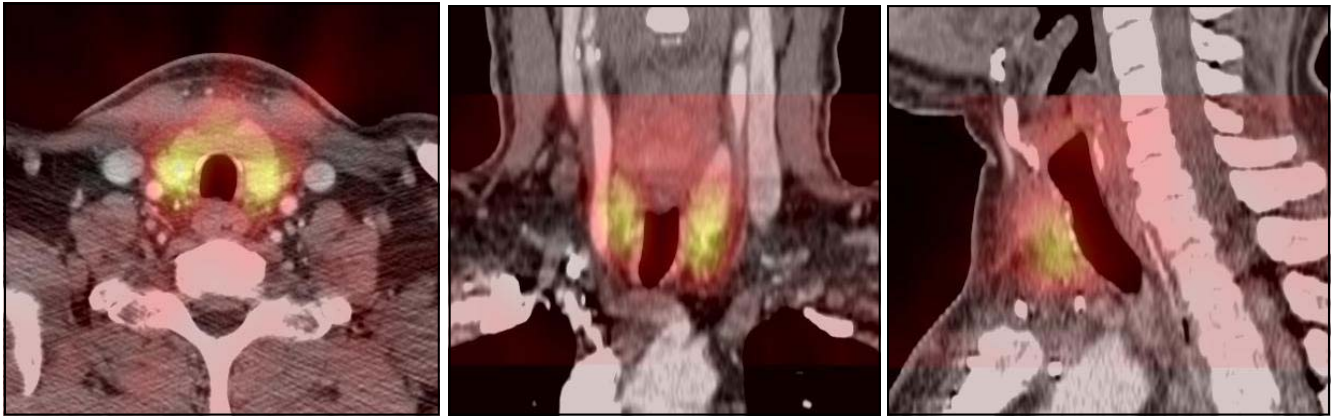


SPECT - CT and MRI FUSION - NUCLEAR MEDICINE



SPECT-CT fusion imaging to evaluate for a parathyroid adenoma: Tc-99m Sestamibi SPECT fused with a diagnostic CT of the neck.

NRAD is pleased to offer SPECT-CT and SPECT-MRI Fusion at our Nuclear Medicine 765 Stewart Avenue, Garden City and 6 Ohio Drive, Suite 104, Lake Success offices. Fusion imaging combines optimal functional (SPECT) and anatomic (CT/MRI) examinations to precisely localize disease as well as to improve lesion detection and characterization.

INDICATIONS:

- **Oncology:** Prostate Ca (prostateint); Thyroid Ca (iodine-131); Neuroendocrine tumors—pheochromocytoma, carcinoid (Octreoscan, MIBG)
- **Musculoskeletal:** Infection/inflammation (Indium-WBC, Gallium-67); spondylolysis (Bone Scan).
- **Infection:** (Indium-WBC, Gallium-67)
- **Endocrine:** parathyroid adenoma (Sestamibi/I-123).
- **Hemangioma:** (Tagged RBC Scan)
- **Splenosis:** (Sulfur Colloid Scan)

FUSION TECHNOLOGY BENEFITS:

- Accurate localization of disease.
- Detection of occult sites of disease.
- Differentiation from benign processes and physiologic uptake.
- Useful for biopsy and surgical planning.

Daniel Benjamin, M.D.
Tira Bunyaviroch, M.D.

516-222-2022



NASSAU RADIOLOGIC GROUP PC & AFFILIATES
It's your body...It's your life.

Paul S. Lang, M.D.

nrad.com